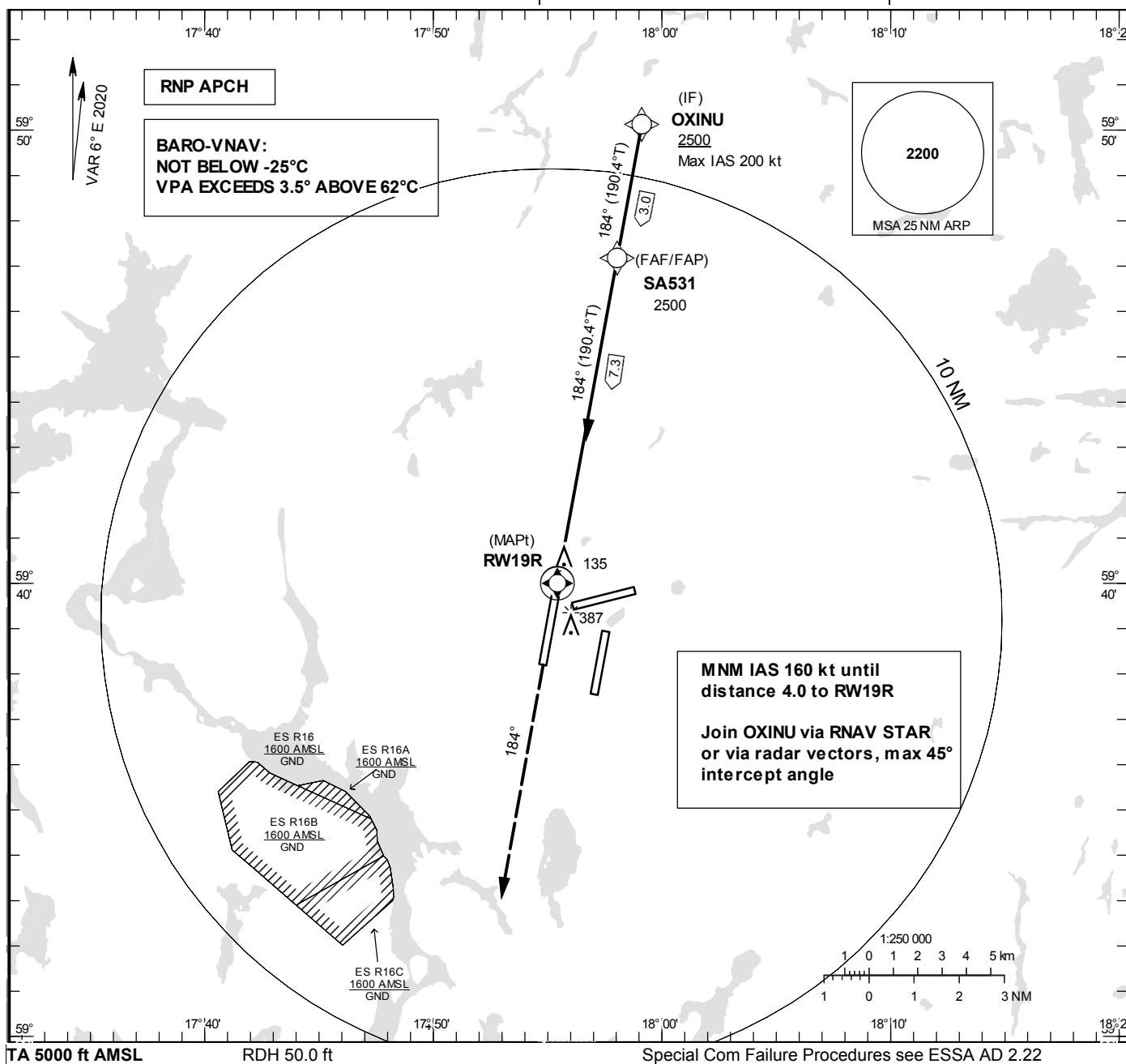


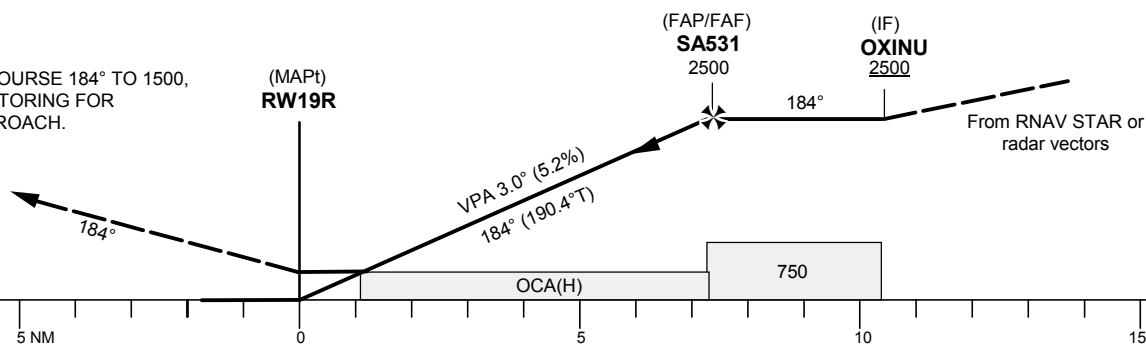
## RNP z RWY 19R

**THR ELEV 118.2 ft, AD ELEV 138 ft**  
OCH are related to THR.  
BRG are MAG (True).  
ALT, HGT and ELEV in ft.

ARLANDA TOWER	128.730/ 118.505/125.130
ARLANDA ATIS ARR	119.005
STOCKHOLM APPROACH	123.755



CLIMB ON COURSE 184° TO 1500,  
RADAR VECTORED FOR  
A NEW APPROACH.



OCA (H)					Final approach	Distance FAF-MAPt 7.3 NM						
Cat of ACFT	A	B	C	D	Dist to RW19R	2	3	4	5	6	7	
LPV	277 (159)	284 (166)	294 (176)	303 (185)	ALT	805	1124	1442	1760	2079	2397	
LNAV/VNAV	387 (269)	397 (279)	418 (300)	444 (326)	GS	kt	80	100	120	140	160	
LNAV	540 (430)				Rate of descent	ft/min	425	530	635	745	850	

AIRAC AIP AMDT 3/2025

STOCKHOLM/Arlanda

RNP z RWY 19R via OXINU

Path Term	Waypoint Identifier	Fly-over	Course°M(°T)	Dist (NM)	Turn Dir	Rest Alts (ft AMSL)	Speed Limits (kt)	VPA/ RDH (°/ft)	Rec Navaid	Navigation Specification
IF	OXINU	-	-	-	-	+2500	-200	-	-	RNP APCH
TF	SA531	-	184° (190.4°)	3.0	-	@2500	-	-	-	RNP APCH
TF	RW19R	Y	184° (190.4°)	7.3	-	@168	-	-3.00/50	-	RNP APCH
CA	-	-	184° (190.4°)	-	-	+1500	-	-	-	RNP APCH
VM	-	-	184°	-	-	@1500	-	-	-	RNP APCH

FAS Data Block

RNP z RWY 19R

Input data

Operation Type	0
SBAS Provider	1 (EGNOS)
Airport Identifier	ESSA
Runway	19
Runway Letter	1 (Right)
Approach Performance Designator	0
Route Indicator	Z
Reference Path Data Selector	0
Reference Path Identifier	E19A
LTP/FTP Latitude	593959.0400N
LTP/FTP Longitude	0175525.5600E
LTP/FTP Ellipsoidal Height (metres)	59.1
FPAP Latitude	593814.1100N
Delta FPAP Latitude (seconds)	-104.9300
FPAP Longitude	0175447.6000E
Delta FPAP Longitude (seconds)	-37.9600
Threshold Crossing Height	50.0
TCH Units Selector	0 (feet)
Glidepath Angle (degrees)	3.00
Course Width (metres)	105.00
Length Offset (metres)	0
HAL (metres)	40.0
VAL (metres)	35.0

Output data

Data Block	10 01 13 13 05 53 D0 00 01 39 31 05 80 25 9B 19 F0 29 B1 07 4F 16 3C CC FC 70 D7 FE F4 01 2C 01 64 00 C8 AF 88 38 FE 34
Calculated CRC Value	8838FE34
Supplied CRC Value	8838FE34
Comparison Result	OK